



Go for Extraordinary. Find It at WSU.

PROSPECTUS FOR INTERNATIONAL STUDENTS

WASHINGTON STATE
 UNIVERSITY

WHY CHOOSE WASHINGTON STATE UNIVERSITY?

Earn a World-Class Degree

RANKED

87*

Top Public Schools

US News & World Report
2021

RANKED

93

Best Value Schools

US News & World Report
2021

RANKED

176*

National Universities

US News & World Report
2021

TIER 1 RESEARCH UNIVERSITY

1 of 94 Public Universities
with Carnegie
Foundation's Tier 1
Highest Research Activity

Carnegie Classification
of Institutions of Higher
Education



Undergraduate degrees

- 98 majors, 86 minors and more than 100 in-major specializations
- Research opportunities and internships

Graduate and professional degrees

- 63 doctoral programs
- 79 master's degree programs
- Professional degrees in pharmacy and veterinary medicine

RANKINGS

US News & World Report 2021

Undergraduate - Global Universities

Agricultural Sciences*	#29
Biology & Biochemistry*	#399
Biotechnology & Applied Microbiology*	#83
Chemical Engineering*	#120
Chemistry*	#318
Electrical & Electronic Engineering	#254
Energy and Fuels	#171
Engineering*	#296
Environment/Ecology*	#229
Materials Science*	#239
Microbiology	#194
Molecular Biology & Genetics*	#341
Nanoscience & Nanotechnology	#196
Physics	#463
Plant & Animal Science*	#65
Social Sciences & Public Health	#189
Best Global Universities*	#297
Best Undergraduate Engineering Programs**	#69

Graduate School

Best Engineering School*	#89
Best Nursing School, master's*	#45
Best Nursing School, DPN*	#25
Biological Sciences*	#98
Chemistry*	#88
Clinical Psychology*	#70
Computer Science*	#75
Criminology	#25
Earth Sciences*	#68
Economics*	#78
English*	#99
Best Fine Arts Programs*	#152
Health Care Management*	#55
History*	#79
Mathematics*	#101
Pharmacy*	#40
Physics*	#83
Political Science*	#81
Psychology*	#112
Sociology*	#42
Speech-Language Pathology*	#72
Veterinary Medicine*	#14

*Tie

**Tie, at schools whose highest degree is a doctorate

38 STEM PROGRAMS

- Agricultural Biotechnology
- Biochemistry
- Bioengineering
- Biological and Agricultural Engineering
- Biology
- Chemical Engineering
- Civil Engineering
- Computer Engineering
- Computer Science
- Construction Engineering
- Construction Management
- Combined Anatomic Pathology Residency
- Combined Clinical Microbiology Residency
- Crop Science
- Data Analysis
- Earth Sciences (Geology)
- Electrical Engineering
- Engineering
- Engineering Science
- Environmental Engineering
- Food Science
- Forestry
- Genetic and Cell Biology
- Immunology and Infectious Diseases
- Interior Design
- Materials Science and Engineering
- Mathematics
- Mechanical Engineering
- Microbiology
- Molecular Biosciences
- Molecular Plant Sciences
- Neuroscience
- Physics and Astronomy
- Plant Biology
- Plant Pathology
- Software Engineering
- Soil Sciences
- Zoology



About Washington State University

Since 1890, Washington State University has educated the next generation of problem solvers. WSU faculty inspire discovery and spark creativity among civic-minded students. Proud alumni become leaders with a singular goal: making the world a better place.

Globally Recognized Programs and Faculty

WSU's programs are ranked among the best nationally and internationally in the fields of engineering, computer science, hospitality, business and many more. WSU students learn from faculty and researchers who are leaders in their field. Eight WSU faculty are recognized as National Academy members – one of the highest honors given to faculty at U.S. higher education institutions.

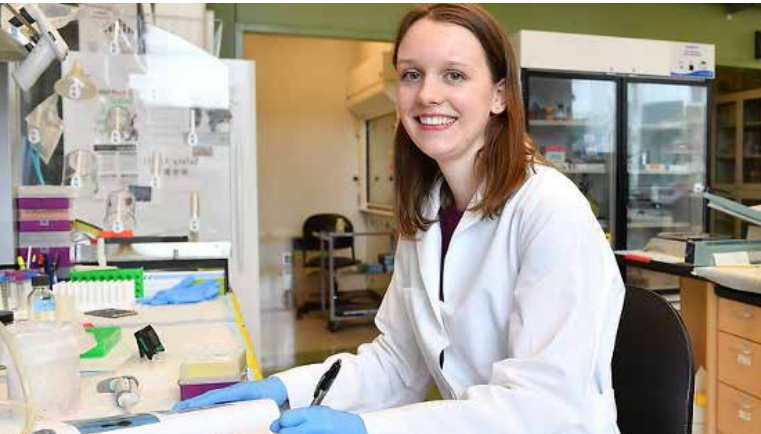
Learn by Doing

WSU places a strong emphasis on learning by doing and encourages students to apply their knowledge in the real world. Students can launch their own businesses through the Center for Entrepreneurial Studies; learn to use tools such as 3D printers and plasma cutters in the Frank Innovation Zone; or create their own television shows at WSU's Cable 8 Productions. Students in every major have opportunities to gain practical experience that can eventually lead to Optional Practical Training (OPT) employment at competitive, U.S.-based international companies.



Top Tier Research

WSU researchers - many of them from outside the U.S. - untangle complex problems to enrich quality of life for us all. Their work safeguards the health of humans and animals. It helps ensure the security and abundance of our food supply. It cultivates sustainable sources of energy to power future generations. Discoveries and innovations of this Tier 1 research institution fuel prosperity across the Pacific Northwest and beyond.



POWERFUL ALUMNI NETWORK

A worldwide network of passionate alumni supports you from classroom to career. With over 200,000 graduates in 146 countries, you can find other Cougars around the globe to help launch your career. Successful WSU alumni and former students include:

- Paul Allen, co-founder of Microsoft
- Ana Cabrera, journalist and anchor on CNN
- Scott Carson, former president and CEO of Boeing Commercial Airplanes
- John Fabian, U.S. astronaut
- Gary Larson, cartoonist
- Dolph Lundgren, actor, producer, director
- Edward R. Murrow, U.S. journalism and broadcasting legend
- Mehmet Mus, economist and politician (Turkey)
- Mieko Nakabayashi, former member of parliament (Japan), professor and author
- Klay Thompson, NBA player



THE WSU ADVANTAGE

Washington State University supports international students with services they need. We offer Academic English, Undergraduate Bridge, Graduate Bridge and Direct Entry programs where you will work alongside American students and earn credit toward your degree while improving your English skills. After successful completion of your Bridge program you will be able to progress to a WSU degree program.

WSU's services include:

- Personalized academic, English and cultural support
- High quality education from caring WSU faculty
- Peer mentors to help you transition, find friends and get involved
- Assistance with immigration and regulatory needs
- Events, programs and ways to share culture
- An excellent health insurance plan for international students

VIRTUAL CAMPUS TOUR

Take a campus tour from home with WSU's Virtual Tour at www.youvisit.com/wsuv



"Before I transferred to WSU, I wasn't interested in any particular school, but I knew I wanted a place that would prepare me for my career. Since coming to WSU, I've had the opportunity to grow in the classroom and through extracurricular activities. I've never felt more confident in my ability to face challenges in the classroom and in the workplace. Another bonus is that I've found my second home here. I've made some good friends and formed special relationships that will continue beyond my time at WSU."

Michelle Lee
Malaysia

DISCOVER OUR CAMPUSES

You can choose to study at one of five campus locations in the Washington State University system:

Pullman, Vancouver, Tri-Cities, Spokane and Everett.

WSU's five campuses offer different learning opportunities across the state, but all have identical education quality, faculty standards and diplomas at graduation.

Pullman: A Traditional Campus

WSU Pullman is the University's first and largest campus. It offers the widest range of degree programs and research opportunities - plus the amazing experience of living on campus in one of America's finest and safest college towns.

WSU Pullman On-Campus Activities

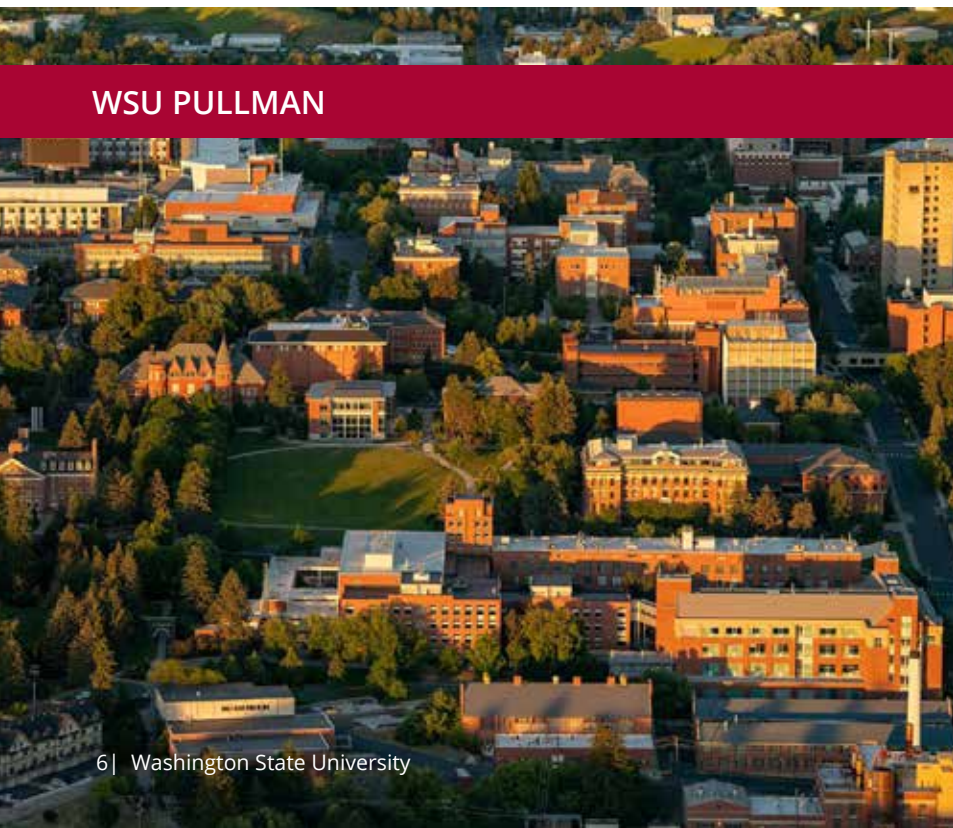
Entertainment and celebrations. Exhibits and lectures. Arts and workshops. Individual and team sports and Cougar athletic competitions. Students can always find on-campus activities to enjoy. WSU welcomes many visiting performers, musicians, comedians and scholars to entertain and educate students, and Cougar home athletic games are campus-wide events. The University has three gymnasiums and recreation centers with facilities for swimming, team sports, rock climbing and more, as well as the Outdoor Recreation Center for students interested in activities such as hiking or rafting.

WSU has active student clubs on campus, including:

- 73 international and cultural clubs
- 400+ registered student organizations
- Industry-related clubs, including over 30 engineering clubs
- 8,000+ students competing in intramural sports



WSU PULLMAN



WE HAVE A CAMPUS FOR YOU

Whether you like cities, college towns or countryside, WSU has a campus for you. WSU is proud to offer unique academic opportunities and student experiences at each campus. After completing their Undergraduate Bridge or Graduate Bridge program in Pullman, Tri-Cities or Vancouver (depending on their major), many students will have the option to finish their degree in Pullman or pursue studying on another WSU Campus.

WSU Everett

WSU Everett offers bachelor's degree completion programs for juniors and seniors in the Seattle metro area. These programs focus on fields that are in high demand in the region, such as electrical engineering, hospitality, software engineering and data analytics.

WSU Spokane

Located near the medical district of Washington's second-largest city, WSU Spokane offers degree programs that focus on health science and medical education.

WSU Tri-Cities

WSU Tri-Cities emphasizes the learning-while-doing approach to educating students, focusing primarily on science, technology, engineering and math (STEM) disciplines and on developing industry partnerships for research and internship opportunities. WSU Tri-Cities partners with the Pacific Northwest National Laboratory (PNNL) on many projects, including in the PNNL research facilities on the Tri-Cities campus and with faculty who hold joint research appointments with both organizations.

WSU Vancouver

WSU Vancouver's campus combines a small-college feel with the resources of an internationally respected research university. Located just minutes from Portland, Oregon, WSU Vancouver offers programs in business, engineering, hospitality and other in-demand disciplines. WSU is the only Tier-1 research university in the Portland metro area.



WSU EVERETT



WSU SPOKANE



WSU TRI-CITIES



WSU VANCOUVER

Diverse student population from around the world
31,607 students | 30% multicultural
48 U.S. states | 106 countries

Accessible faculty
About 16:1 student-faculty ratio

Vast library system
28 million+ items available through a library consortium

11 Colleges
Hundreds of disciplines

500+ study abroad programs
Over 48 countries | 7 continents

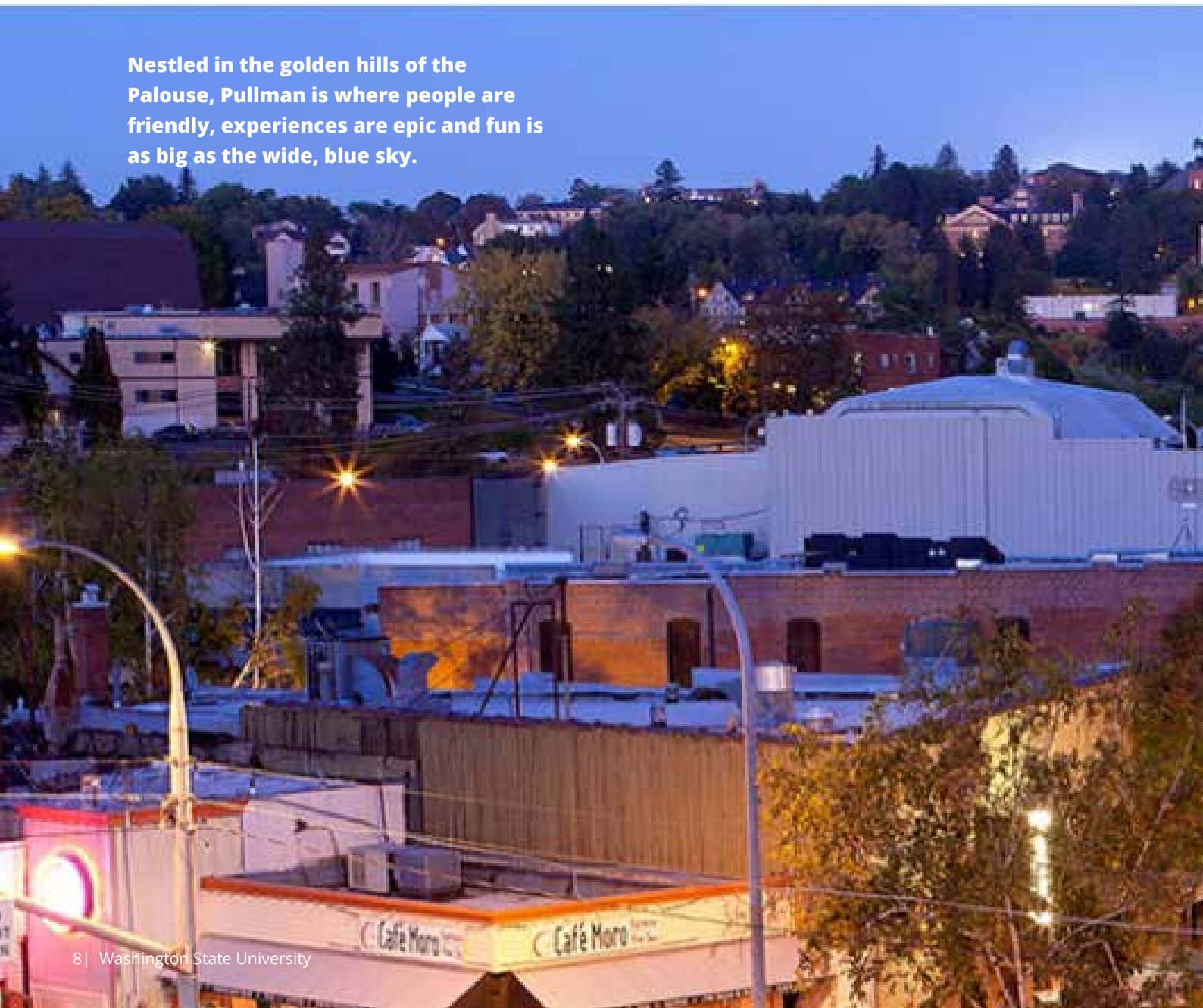


Pullman: A Town Built for You

For more than 125 years, the town of Pullman and the University have grown and developed together to form a vibrant, safe and student-centered community. With beautiful scenery, clean air and 172 days of sunshine annually, Pullman gives you a relaxed setting with the charm of a traditional, American college town. Here, students can use the resources of a major university to customize their education and prepare for internship and work opportunities.

University students comprise over 60% of the town's 34,500 residents. Local professionals, business and farm owners, WSU faculty and staff, and their families round out the population.

Nestled in the golden hills of the Palouse, Pullman is where people are friendly, experiences are epic and fun is as big as the wide, blue sky.





Pullman: A Community of Cougs

The downtown shopping district is a short walk or bus ride away from campus. Downtown you'll find coffee shops, grocery stores, specialty retailers, restaurants and more. And there are plenty of outdoor recreation areas, including parks, trails and athletic fields. Pullman is also close to water for kayaking or rowing, and mountains for hiking or skiing.

WSU students use Pullman's excellent public transit system free of charge, and the University's bike-sharing program gives you another easy way to get where you need to go.





82%

of new freshmen live in University housing

27

on-campus residence halls and apartment complexes

HOUSING AND DINING

Who lives in WSU housing?

The WSU Freshman Live-In Requirement (FLIR) requires all unmarried, first-year college students under the age of 20 to live in University housing for two semesters, including international students pursuing a bachelor's degree, Undergraduate Bridge and Academic English students.

Undergraduate transfer students and Year One undergraduate students age 20 or over are not required to live in University housing.

All enrolled WSU students may request to live in University housing regardless of program. Please visit <https://housing.wsu.edu/housing-essentials/contracts-and-policies> for complete housing policies.

Meal plans

Students receive a meal plan as part of their housing package. Students not subject to FLIR, including graduate students and transfer students, can purchase a resident dining account separately if desired.



Single Room - Sample Layout



Double Room - Sample Layout



SUPPORT AND MENTORSHIP

Health care and health insurance

WSU requires all international students to maintain the international Student Health Insurance Plan (SHIP) while in school. Incoming students are automatically enrolled in the plan.

- Cougar Health Services (CHS) on campus offers same-day and scheduled appointments to students. Medical services include lab and x-ray services, physical therapy, nutrition counseling, immunizations, allergy desensitization injections, behavioral health, psychological services and counseling. CHS also offers a full-service pharmacy and vision clinic.
- Available off campus are medical clinics and a regional hospital.

Transportation

- Pullman Transit buses are free for WSU students. Show your Cougar Card to ride to nearby destinations on and off campus.
- Express buses offer fee-based shuttle service to Spokane International Airport and to and from the Seattle area during vacations and weekends.
- Other transportation includes car and bike rentals and taxi and ride services.

Learning Support Center (LSC)

LSC tutors can help with English speaking, listening, writing, reading, pronunciation, grammar and University coursework.

- Tutors answer academic questions and assist students with research skills, the WSU library website, formatting assignments in Word and practicing presentations.
- The LSC offers workshops on career preparedness, access to computers, desk space and a library.

Professional mentoring

Our professional mentoring options are great companions to the research you conduct in other areas of your program. Get the advice you need to succeed in the workforce from the people who know best: your professors and local industry leaders.

Boeing Mentorship Program

Pair with a mentor from Boeing who will teach you the ins and outs of the aerospace industry and opportunities at Boeing, and provide general career guidance. Mentors (mostly WSU alumni) regularly communicate with students in engineering, business and communication majors by email and visit with students on campus at least once during the program.

Society of Women Engineers

Currently employed female engineers are matched with students to answer any questions and facilitate networking activities, job shadowing, touring nearby facilities and more.

Murrow Mentors for Communication

Experienced Edward R. Murrow College of Communication alumni coach high-achieving juniors and seniors who have the dedication, determination and grit to excel in the world of media from the 24-hour news cycle to producing the next *New York Times* bestseller.

Carson College Mentors for Business

With the changing tides of technology, financial regulations and global competition, it's more important than ever to graduate with the business savvy that can adapt to today's ever-evolving market.



INNOVATIVE RESEARCH

Since 2008, WSU's research awards have increased by 18%, placing WSU among the nation's top research universities. WSU is also recognized as a product development and business leader. In the past decade, WSU students and faculty have filed over 500 patents and developed commercial relationships that have generated over \$10 million in revenue.

Research Beyond Engineering and Science

At WSU, hands-on learning and research opportunities exist in almost every program, from business and economics to communications and psychology. Examples of WSU's research impact include:

- #1 for Research in Advertising *ComVista*
- Top 100 Worldwide for Output in Business Research *UTD Business Research Rankings 2018*
- 25 psychology research labs and three business research centers
- Computer science research in high-performance computing, networking and artificial intelligence



Edward R. Murrow College of Communication

WSU's Edward R. Murrow College of Communication prepares students for careers in media, journalism and film and television production, as well as for jobs in areas such as advertising, public relations and strategic communications.

- You can get practical experience on campus in WSU's own television, radio and newspaper programs.
- Murrow Global Expeditions allows you to create your own content around the world.
- The College is named after Edward R. Murrow, a WSU graduate and one of the most famous journalists in U.S. history.

For additional information, visit www.murrow.wsu.edu.

A Leader in Power Engineering

The electric power program at WSU is considered among the best in the world in power systems research and power engineering education.

- WSU's Energy Systems Innovation Center is at the forefront of global research, education and technology innovation and transfer for energy systems, including smart grids. The University leads the nation's efforts in power grid reliability and efficiency through partnerships with the US Department of Energy and companies including General Electric, the sponsor of WSU's GE Grid Solutions Smart City Testbed.

For additional information, visit school.eecs.wsu.edu/research/power-engineering.



Carson College of Business

The Carson College of Business stands among the top 5% of business schools worldwide that have achieved full accreditation in both business and accounting from the AACSB, the oldest and most respected international business program accrediting body.

- Ranked No. 15 for Undergraduate International Business by *U.S. News & World Report 2019* and backed by partnerships with multinationals such as Microsoft, McKinstry, BP and Boeing, WSU's business college prepares students for success in a global market.

For additional information, visit www.business.wsu.edu.

Discover why WSU is the best place to start your career.

Positioned in a thriving business and tech hub with supportive career resources, exceptional academics and an outstanding alumni network, WSU students are preparing to succeed from their first day on campus.

LAUNCH YOUR CAREER

Dedicated Career Support

We are dedicated to your success both in the classroom and in your career after graduation. Our Academic Success and Career Center offers multiple free services to help you develop your career including:

- Internship placement assistance
- CV and cover letter review
- Career coaching assessments
- Campus-wide career fairs, program-specific job fairs and industry networking events

Industry Partnerships in the Classroom

WSU's proximity to leading tech and manufacturing destinations including Seattle, Portland and the Tri-Cities allows students to network with industry professionals.

- WSU has partnered with major businesses including Microsoft, Boeing, BP, Deloitte, Amazon, Intel and Merrill Lynch to develop new curriculum, mentor students and conduct large-scale research projects.
- Industry professionals are often guest speakers at campus events and the curriculum is centered around industry needs, such as business classes designed to simulate enterprise environments or computer science classes tackling the latest trends in AI and data analytics.

Internship and Job Placement Support

Our dedicated career services staff help students find valuable internships and jobs in government, business, industry and nonprofit sectors both as students and after graduation.

- Many WSU degrees offer guaranteed internships and practical experiences. For example, the hospitality business management program guarantees at least 1,000 hours of paid work experience before graduation.
- Students in fields such as fashion design or international business have internships and global study built directly into the curriculum.
- With assistance from the Academic Success and Career Center on CVs and interviewing, WSU international students have strong job prospects at graduation.



MAJOR EMPLOYERS IN WASHINGTON STATE

- Amazon
- Boeing
- Cray
- Expedia
- Facebook
- Google
- HP*
- Intel*
- Microsoft
- Nike*
- Nintendo
- PACCAR Inc.
- Starbucks
- T-Mobile
- Weyerhaeuser

*Located in Portland, Oregon, near the WSU Vancouver campus



OPT* PLACEMENTS 2017-2019 (some examples)

- Amazon
- Apple
- Dell Computers
- Four Seasons Hotel
- General Electric
- Google
- IBM
- Intel
- JP Morgan Chase
- Marriott Hotels
- Microsoft
- Siemens
- Tesla

*Optional Practical Training



UNDERGRADUATE PROGRAMS

With more than 95 bachelor's degrees, flexible study plans and start dates throughout the year, we will help you find the program that best suits your academic goals and your student profile. Where you begin will depend on your grades and English level. But no matter what your starting point is, we offer several routes that get you to graduation day so that where you end up is where you want to be, graduating with a degree from WSU.

DIRECT ENTRY (TRADITIONAL ADMISSION).

If you meet the academic and English language requirements for your degree program, you can apply directly to WSU.

UNDERGRADUATE BRIDGE.

WSU's Undergraduate Bridge program combines academic support with credit-bearing classes and personalized advising to help you smoothly transition to university life. In most majors you will graduate in the same amount of time as Direct Entry students. For more information, visit ip.wsu.edu/future-students.

To apply for Direct Entry or the Bridge program, you will need:

- An application completed online
- High school transcripts
- University/college transcripts (for transfer applicants)
- Passport
- English test score

For more information, visit ip.wsu.edu/future-students.

Dates			
Program	DIRECT ENTRY	UNDERGRADUATE BRIDGE	
Start Dates	Fall: August Spring: January	Fall: August Spring: January	
Entry Requirements*			
Program	UNDERGRADUATE DIRECT ENTRY	UNDERGRADUATE BRIDGE	
		1 semester	2 semester
Program Requirements	<ul style="list-style-type: none"> • High school diploma • Additional materials may be required 	High school diploma	
Minimum GPA Equivalent	2.7 freshman admission 2.5 transfer admission	2.3	2.3
TOEFL iBT	79	70	60
IELTS	6.5	6.0	5.5
IELA	-	180	162
Duolingo	120	110	90
Password	-	Level 6	Level 5

*Note: Entry requirements are subject to change and may vary by program.
Institutional Code TOEFL: 4705 SAT: 4705 ACT: 4482



Sample Undergraduate Bridge Program - Science					
2-Semester Bridge			1-Semester Bridge		
Semester 1	Course Title	Credits	Semester 1	Course Title	Credits
UNIV 111	Developing Academic Strategies for Listening and Discussion	4	UNIV 111	Developing Academic Strategies for Listening & Discussion	4
MATH XXX		3	MATH 201	Mathematics for Business and Economics	3
MUSIC 163	[ARTS] World Music	3	MUS 163	[ARTS] World Music	3
UNIV 104	First-Year Success Seminar	2	UNIV 104	First-Year Success Seminar	2
Semester 2	Course Title	Credits			
UNIV 110	Developing Academic Strategies for Reading and Writing	4			
HIST 105	[ROOT] The Roots of Contemporary Issues	3			
MATH XXX		3			
COM 102	[COMM] Public Speaking in the Digital Age	3			

UNDERGRADUATE BRIDGE PROGRAM

Semester(s)	Start Dates		Credits*
	Fall	Spring	
Agricultural Sciences			
2 semester	●	●	91-98/120-123
1 semester	●	●	106-111/120-123
Architecture			
2 semester	●	●	96-100/120
1 semester	●	●	105-108/120
Business			
2 semester	●	●	92-96/120
1 semester	●	●	106-108/120
Computer Science			
2 semester	●	●	95-99/120-123
1 semester	●	●	109-111/120-123
Engineering			
2 semester	●	●	92-105/120-129
1 semester	●	●	106-117/120-129
Fine Arts			
2 semester	●	●	89-104/120-133
1 semester	●	●	104-117/120-133
General			
2 semester	●	●	94-110/120-133
1 semester	●	●	106-121/120-133
Journalism/Communications			
2 semester	●	●	92-96/120
1 semester	●	●	106-108/120
Mathematics			
2 semester	●	●	90-97/120-123
1 semester	●	●	104-109/120-123
Science			
2 semester	●	●	89-93/120
1 semester	●	●	104-106/120

*Estimated credits remaining after completing Bridge / Total credit hours needed to complete degree



"As an international student, I chose WSU because of its location in a very safe town. After confirming my offer, I was sure about my decision when my Peer Mentor provided me more information about the school and answered all my questions patiently. So, I knew WSU must be an inclusive community and the right place for international students. I started my academic study in summer 2019 at WSU, and there were so many people around, but the International Student Center gave me a lot of help. WSU provides me so many opportunities to improve myself in the classroom and through voluntary activities. It will always be a home to every Cougar!"

Zichen Fan
China



"Washington State University is home away from home. As an international student who has lived here for close to two years, I have shared in the smiles, camaraderie, interaction and community of different students and faculty from every part of the world. I am amazed about how the International Programs staff at WSU are amicable and always ready to help – they relate to me like a family! I have made the best choice of school to study, and I will be forever grateful. I would recommend WSU for international students to attend. You will be glad you did. Go Cougs!"

Stephen Onayemi
Nigeria

US Undergraduate Education System

To graduate with your 4-year undergraduate degree, you will need to take the following classes.

WSU UCORE classes. General education courses include English composition, social sciences, humanities, history, mathematics and natural/physical science. These are typically taken at the beginning of your study plan.

Major classes. These classes will be about the specific field of study you choose. They are typically taken in the latter part of your study plan.

GRADUATE ADMISSIONS

We know that as a prospective graduate student, your undergraduate experience or time in the workforce has given you a good idea of what you want to gain in the next phase of your student journey. WSU's 11 colleges; 106 master's, doctoral and professional degrees; and several routes to admission are designed so that no matter what you come in with, there's a way for you to complete your degree here. Let us show you how.

DIRECT ENTRY (TRADITIONAL ADMISSION).

If you meet the academic and English language requirements for your degree program, you can apply directly to WSU.

To apply, you will need:

- An application completed online
- University/college transcripts (for transfer applicants)
- English proficiency scores
- Three letters of recommendation
- Passport

Graduate degrees are competitive and we will thoroughly review your application. Please expect a longer turnaround for an admissions decision. For more information, visit ip.wsu.edu/future-students.

GRADUATE BRIDGE.

Our Graduate Bridge program allows you to begin earning credits toward your degree even without GRE. The program will help build the academic foundation and essential English language skills you need to successfully progress to your masters degree. For more information, visit ip.wsu.edu/future-students.

To apply, you will need:

- An application completed online
- University/college transcripts (for transfer applicants)
- English proficiency scores
- Passport

Dates			
Program	DIRECT ENTRY	GRADUATE BRIDGE	
Start Dates	Fall: August Spring: January	Fall: August Spring: January	
Entry Requirements			
Program	DIRECT ENTRY	GRADUATE BRIDGE	
		1 semester	2 semester
Program Requirements	<ul style="list-style-type: none"> • Bachelor's degree in relevant subject • Additional material may also be required • GRE or GMAT scores for some degrees 	<ul style="list-style-type: none"> • Undergraduate degree in relevant subject • Additional material may also be required 	
Minimum GPA Equivalent	3.0	2.5-2.75	2.5
TOEFL iBT	80	70-75	65-70
IELTS	7.0	6.0-6.5	5.0-6.0
IELA	-	176 169 subscores in reading and writing	169 162 subscores in reading and writing
Duolingo	-	120	95

Note: Entry requirements are subject to change and may vary by program.
Institutional Code TOEFL: 4705 SAT: 4705 ACT: 4482

Sample GRADUATE BRIDGE Program - Computer Science

2-Semester Graduate Bridge 30 credit-hour program 12 Bridge credits apply toward degree 18 credit hours remaining for degree			1-Semester Graduate Bridge 30 credit-hour program 6 Bridge credits apply toward degree 24 credit hours remaining for degree		
Semester 1	Course Title	Credits	Semester 1	Course Title	Credits
IALC 604	Research and Critical Analysis I	6	IALC 704	Research and Critical Analysis II	6
IALC 605	Research and Critical Analysis I Directed Study	6	IALC 705	Research and Critical Analysis II Directed Study	6
CptS 516 or CptS 553	Algorithmics 3 or Graph Theory 3	3	CptS 516 or 553	Algorithmics 3 or Graph Theory 3	3
CptS 5XX	Selected from Computer Science courses	3	CptS 5XX	Selected from Computer Science courses	3
Semester 2	Course Title	Credits			
IALC 704	Research and Critical Analysis II	6			
IALC 705	Research and Critical Analysis II Directed Study	6			
CptS 516 or 553	Algorithmics 3 or Graph Theory 3	3			
CptS 5XX	Selected from Computer Science courses	3			



GRADUATE BRIDGE PROGRAM REQUIREMENTS

Entry and progression requirements are subject to change and may vary by program.

Length	Start Dates		Credits*	Entry Requirements No GRE required					
	Fall	Spring		GPA	Relevant Undergraduate Degree	TOEFL iBT	IELTS	IELA	Duolingo
MS Apparel, Textiles, Merchandising and Design									
2 semester	●		17/30	2.5	• Undergraduate degree; students without related major backgrounds are welcome to apply but those applying without an undergraduate degree related to the field may have to take 1-3 courses after the Bridge. This will not impact time to completion.	60	6.0	169	95
1 semester	●		23/30			75	6.0	176	N/A
MS Applied Economics									
2 semester	●	●	18/30	2.5	• Undergraduate degree in Economics or related discipline preferred. Must have taken calculus, linear algebra, statistics, econometrics and intermediate macroeconomics courses (or equivalent) with passing grades.	66	6.0	169	95
1 semester	●	●	24/30			80	6.0	176	N/A
MArch Architecture									
2 semester	●		33-45/ 48-60	2.5	• Undergraduate degree in Architecture, Architectural Studies or related field • Submission of portfolio preferred	66	6.0	162	95
1 semester	●		42-54/ 48-60			80	6.5	176	N/A
MS Chemical Engineering									
2 semester	●		18/30	2.5	• Undergraduate degree in Chemical Engineering or Applied Chemistry • Relevant degrees may be considered based on completed coursework	65	5.5	169	95
1 semester	●		24/30			75	6.5	176	N/A
MS Civil Engineering									
2 semester	●	●	18/30	2.5	• Undergraduate degree in Civil Engineering, Environmental Engineering, Engineering Mechanics or Applied Physics • Relevant degrees may be considered based on completed coursework	65	5.5	169	95
1 semester	●	●	24/30			75	6.5	176	N/A
MS Computer Science - Thesis (Progress to Vancouver campus)									
1 semester	●		24/30	2.5	• Undergraduate degree in Computer Science, Mathematics, Software Engineering or Computer Engineering • Admission to this program is dependent on review of completed coursework and matching of research area	75	6.5	176	N/A
MS Computer Science (Progress to Pullman campus)									
2 semester	●	●	18/30	2.5	• Undergraduate degree in Computer Science, Software Engineering or Computer Engineering • Relevant degrees may be considered based on completed coursework	65	6.0	169	95
1 semester	●	●	24/30			75	7.0	176	N/A
MEd Curriculum and Instruction									
2 semester	●	●	25/37	2.5	• Undergraduate degree or equivalent	66	6.0	169	95
1 semester	●	●	31/37			80	7.0	176	N/A
MEd Educational Leadership									
2 semester	●	●	25/37	2.5	• Undergraduate degree in K-12 Education • Must hold teaching certificate or license and have 3 years teaching experience	66	6.0	169	95
1 semester	●	●	31/37			80	6.5	176	N/A
MEd Educational Psychology									
2 semester	●	●	25/37	2.5	• Undergraduate degree in Education, Prevention Science, Psychology, Statistics or Sociology • Must have basic research experience in area of degree	66	6.0	169	95
1 semester	●	●	31/37			80	7.0	176	N/A
MS Electrical Engineering (Progress to Tri-Cities campus)									
2 semester	●	●	18/30	2.5	• Undergraduate degree in Electrical Engineering, Computer Engineering, Electronics and Communications Engineering, Electronics Engineering or Instrumentation and Control Engineering • Relevant degrees may be considered based on completed coursework	65	5.5	169	95
1 semester	●	●	24/30			75	6.5	176	N/A
MS Electrical Engineering (Progress to Pullman campus)									
2 semester	●	●	20/32	2.5	• Undergraduate degree in Electrical Engineering, Computer Engineering, Electronics and Communications Engineering, Electronics Engineering or Instrumentation and Control Engineering • Relevant degrees may be considered based on completed coursework	65	5.5	169	95
1 semester	●	●	26/32			75	6.5	176	N/A
MS Electrical Engineering - Thesis (Progress to Vancouver campus)									
1 semester	●		24/30	2.5	• Undergraduate degree in Electrical Engineering, Electronics Engineering, Computer Engineering, Instrumentation or Power Systems • Admission to this program is dependent on review of completed coursework and matching of research area	75	6.5	176	N/A
MS Environmental Engineering									
2 semester	●	●	18/30	2.5	• Undergraduate degree in Civil Engineering, Environmental Engineering, Applied Physics, Environmental Science, Biology or Chemistry • Relevant degrees may be considered based on completed coursework	65	5.5	169	95
1 semester	●	●	24/30			75	6.5	176	N/A
MFA Fine Arts									
1 semester	●		51/62	2.75	• Undergraduate degree or equivalent • Submission of portfolio required	75	6.5	176	N/A

*Estimated credits remaining after Bridge / Total credit hours needed to complete degree

GRADUATE BRIDGE PROGRAM REQUIREMENTS (continued)

Length	Start Dates		Credits*	Entry Requirements					
	Fall	Spring		GPA	Relevant Undergraduate Degree	TOEFL IBT	IELTS	IELA	Duolingo
Interior Design									
2 semester	●		24-45/ 36-57	2.5	<ul style="list-style-type: none"> Undergraduate degree in Interior Design or related field Statement of Program Intentions and portfolio of design work 	66	6.0	169	95
1 semester	●		30-51/ 36-57			80	6.5	176	N/A
MEd Language, Literacy & Technology									
2 semester	●		20/32	2.5	<ul style="list-style-type: none"> Undergraduate degree in Language or Literacy Education, Language Acquisition, Literacy Education or Educational Psychology Must have basic teaching experience in area of degree 	70	6.5	169	95
1 semester	●		26/32			80	7.0	176	N/A
MS Materials Science and Engineering									
2 semester	●	●	21/33	2.5	<ul style="list-style-type: none"> Undergraduate degree in Mechanical Engineering; Materials Science and Engineering; Metallurgical, Ceramic, or Polymer Engineering; Engineering Mechanics or Manufacturing/Process Engineering Relevant degrees may be considered based on completed coursework 	65	5.5	169	95
1 semester	●	●	27/33			75	6.5	176	N/A
MS Mathematics (Computational Finance)									
2 semester	●	●	19/31	2.5	<ul style="list-style-type: none"> Undergraduate degree in Mathematics or related discipline preferred Must have taken advanced calculus and linear algebra courses (or equivalent) with passing grades 	66	6.0	169	95
1 semester	●	●	25/31			80	6.5	176	N/A
MS Mechanical Engineering (Progress to Tri-Cities campus)									
2 semester	●	●	18/30	2.5	<ul style="list-style-type: none"> Undergraduate degree in Mechanical Engineering, Materials Engineering, Aeronautical/Aerospace Engineering, Engineering Mechanics, Manufacturing/Process Engineering, Chemical/Petroleum Engineering or Marine Engineering/Naval Architecture Relevant degrees may be considered based on completed coursework 	65	5.5	169	95
1 semester	●	●	24/30			75	6.5	176	N/A
MS Mechanical Engineering - Thesis (Progress to Vancouver campus)									
1 semester	●		24/30	2.5	<ul style="list-style-type: none"> Undergraduate degree in Mechanical Engineering, Aerospace Engineering, Automotive Engineering, Thermal Engineering or Engineering Mechanics Admission to this program depends on a review of completed coursework and matching of research area 	75	6.5	176	N/A
MS Mechanical Engineering (Progress to Pullman campus)									
2 semester	●	●	21/33	2.5	<ul style="list-style-type: none"> Undergraduate degree in Mechanical Engineering, Materials Engineering, Aeronautical/Aerospace Engineering, Engineering Mechanics or Manufacturing/Process Engineering Relevant degrees may be considered based on completed coursework 	65	5.5	169	95
1 semester	●	●	27/33			75	6.5	176	N/A
MS Political Science									
2 semester	●	●	19/31	2.5	Undergraduate degree or equivalent	66	6.0	169	95
1 semester	●	●	25/31			80	7.0	176	N/A
MS Statistics									
2 semester	●	●	18/30	2.5	<ul style="list-style-type: none"> Undergraduate degree in Mathematics or related discipline preferred Must have taken advanced calculus and linear algebra courses (or equivalent) 	66	6.0	169	95
1 semester	●	●	24/30			80	6.5	176	N/A

"As an International student from Nepal, I had a difficult time understanding the different cultures and lectures. However, it did not take much time to catch up. I connected with many friends, faculty, and staff in a short time too. The professors are very helpful and supportive.

"I feel proud to be a part of the Cougar family. One of my greatest learning experiences was gaining practical skills. The classes are hands-on with field studies, presentations, and involvement. I also use campus resources, such as free tutoring at the writing center and the library. I love campus, social life, campus resources, and my classes. WSU has students from different parts of the world and I love how they share their ideas during class discussions. Whenever I see successful Cougars making a difference in their lives and communities, I get inspired to work harder and smarter."



Navram "Raj" Lamichhane
Nepal



ACADEMIC ENGLISH

If you do not meet the Direct Entry, Undergraduate Bridge or Graduate Bridge entry language requirements, you can enter our Academic English (AE) program to improve your academic and language skills. Once you have achieved the required language level, you can progress to your Bridge program or enter your degree program directly.

Key Program Facts

Accredited academic preparation intensive English program

Requirements

An application completed online
 High school diploma
 All high school and university/college transcripts
 Minimum age 16
 No English score required. Students will be assessed and placed on arrival.

Levels of instruction

Beginner to High Advanced

Start Dates for Academic English

Fall Mid-August **Spring** Early January

For current information, go to ip.wsu.edu/learn-english

WHAT YOU WILL LEARN

WSU's Academic English program is among the top 5 in the U.S. In your academically focused curriculum, you will learn the English language by using it daily in speaking, listening, reading and writing.

ESTIMATED ACADEMIC ENGLISH LEVEL BASED ON TEST SCORES

All students take a placement test during Orientation to determine their AE level. The table below shows your estimated level of AE based on your standardized test scores.

AE Levels	TOEFL iBT	IELTS	IELA	Duolingo	ITEP
Level 2	≤31	≤2.5	130	<55	<2.0
Level 3	32-49	3.0	140	65	2.5
Level 4	50-59	5.0	154	75	3
Level 5	60-69	5.5	162	90	3.5
Level 6	70-79	6.5	176	120	3.9



ACADEMIC PROGRAMS

FIND YOUR DEGREE. With a wide range of subject areas and admissions options, you can find the perfect degree for your chosen career. You can choose to apply for Direct Entry to the University or for a Bridge program that provides extra academic, language and cultural support. From the day you apply to the day you graduate, we are here to help you succeed every step of the way. Flip to the back cover to learn how to apply.

B=Bachelor's **M=Master's** **D=Doctorate** **GB** The Graduate Bridge program that can lead to this degree is indicated in teal. This WSU degree is also available through Direct Entry.

Undergraduate Bridge Program

Indicates the Undergraduate Bridge program that should be taken to progress to an undergraduate academic program. This program is also available through Direct Entry.

AS Agricultural Sciences **FA** Fine Arts

AR Architecture **GE** General

BU Business **JC** Journalism/Communication

CS Computer Science **MA** Mathematics

EN Engineering **SC** Science

■ Complete these Graduate Bridge programs at WSU Pullman and progress to WSU Pullman, WSU Tri-Cities or WSU Vancouver depending on the program and campus you are admitted to. Visit the WSU International Programs Future Students website for more details including minimum entry and progression requirements, thesis or non-thesis options and campus location information.

● This WSU degree program is available through undergraduate direct or graduate admission.

▶ Designated STEM degree by the US Department of Homeland Security.

¹Start these health science majors in Pullman, Tri-Cities or Vancouver and complete your bachelor's degree at WSU's health sciences campus in Spokane.

²Professional schools of health and law do not require any particular major. Whatever your major or professional goals, our Health Professions Student Center and Pre-Law Resource Center can help you get the right prerequisites and prepare you for the school of your choice.

	Pullman			Vancouver			Tri-Cities			Spokane			Everett		
	B	M	D	B	M	D	B	M	D	B	M	D	B	M	D
Carson College of Business															
Accounting	BU	●	●	●			●								
Business Administration			●	●			●								
Entrepreneurship	BU			●											
Finance	BU		●	●											
Hospitality Business Management	BU		●	●			●							●	
International Business	BU														
Management [specializations in Human Resource Management or Innovation and Change]	BU		●	●			●								
Management Information Systems	BU		●	●											
Marketing	BU		●	●											
Wine and Beverage Business Management	BU						●								
College of Agricultural, Human and Natural Resource Sciences															
Agriculture			●												
▶Agricultural Biotechnology	AS														
Agricultural Economics	AS		●												
Agricultural Education	AS														
Agricultural and Food Business Economics	AS														
Agriculture - Food Science and Management			●												
Agricultural and Food Systems	AS														
Agricultural Technology and Production Management	AS														
Agriculture and Food Security	AS														
Animal Sciences [specialization in Animal Management]	AS	●	●												
Apparel, Merchandising, Design and Textiles [specializations in Apparel Design or Merchandising]	BU	GB													
Applied Economics		GB													
▶Crop Science			●	●											
▶Earth Sciences (Geology)	SC		●	●											
Economics				●											
Economic Sciences [specializations in Agricultural Economics; Business Economics; International Economics and Development; Economics; Policy and Law; Environmental and Resource Economics; Financial Markets; Quantitative Economics]	BU														
Environmental and Ecosystem Sciences	SC			●			●								
Environmental and Natural Resource Science		●	●							●					
Earth and Environmental Science	AS			●	●		●								
Field Crop Management	AS														
▶Food Science [specialization in Fermentation Science]	AS	●	●												
▶Forestry	SC														
Fruit and Vegetable Management	AS														
Horticulture		●	●												

	Pullman			Vancouver			Tri-Cities			Spokane			Everett		
	B	M	D	B	M	D	B	M	D	B	M	D	B	M	D
College of Agriculture, Human and Natural Resource Sciences (cont.)															
Human Development [specialization in Family and Consumer Sciences]	GE			●											
Integrated Plant Sciences	AS														
Landscape, Nursery and Greenhouse Management	AS														
►Molecular Plant Sciences			●												
Organic and Sustainable Agricultural Systems	AS													●	
Prevention Science			●			●						●			
►Soil Sciences		●	●												
Turfgrass Management	AS														
Winemaking (Viticulture and Enology)	AS						●								
College of Arts and Sciences															
Anthropology [specialization in Archaeology]	GE	●	●	●											
American Studies			●												
Asian Studies	GE														
Basic Medical Sciences	SC														
Biological Sciences (General Studies)								●							
►Biology [specializations in Biology Teaching; Ecology and Evolutionary Biology; Entomology] (PhD: Molecular Biology)	SC	●	●	●	●	●	●	●	●						
►Chemistry [specializations in Chemistry Teaching; Materials Chemistry; Professional Chemistry]	SC	●	●					●							
Chinese	GE														
Comparative Ethnic Studies	GE														
Creative Media and Digital Culture				●											
Criminal Justice and Criminology	GE	●	●	●							●	●			
Data Analytics	MA			●										●	
Digital Technology and Culture	GE			●				●							
English [specializations in Creative Writing; English Teaching; Literary Studies; Rhetoric Professional Writing]	GE	●	●	●				●							
English Education without Certificate				●											
Entomology		●	●												
Fine Arts [specialization in Art History and Studio]	FA	GB						●							
French [specialization in French Teaching]	GE														
History [specialization in History Teaching; General History; History Pre-Law; Social Studies Teaching]	GE	●	●	●				●							
Humanities (General Studies) [specializations in International Area Studies; Linguistics, Religious Studies]	GE			●				●							
Japanese	GE														
►Mathematics [specializations in Actuarial Science; Applied Mathematics; Mathematics Teaching of Theoretical Mathematics]	MA	●	●	●				●							
►Mathematics [specialization in Computational Finance]		GB													
Music	GE	●													
Music Composition	GE														
Music Education	GE														
Music Performance [specializations in Brass, Percussion, Strings, Woodwinds, Jazz Studies, Keyboard, Keyboard Pedagogy or Voice]	GE														
Personnel Psychology/Human Resource Management (Social Sciences)				●											
Philosophy	GE														
Physical Sciences (General Studies)								●							
►Physics and Astronomy [specializations in Astrophysics; Biophysics; Computational Physics; Continuum Physics and Acoustics; Environmental Physics; Materials Physics; Mathematical Physics; Nanotechnology; Optics and Electronics; Physics Education; Physics Teaching]	SC	●	●												
►Plant Biology	SC	●	●		●	●									
►Plant Pathology		●	●												
Political Science [specialization in Global Politics]	GE	GB	●												
Psychology	GE		●	●		●	●								
Public Affairs				●	●										
Social Sciences (General Studies)	GE			●			●								
Sociology	GE		●	●											
Spanish [specialization in Spanish Teaching]	GE														
Statistics		GB	●												
Wildlife Ecology and Conservation Services	SC														
Women's, Gender and Sexuality Studies	GE														
Women's Studies	GE														
►Zoology	SC														

ACADEMIC PROGRAMS (continued)

	Pullman			Vancouver			Tri-Cities			Spokane			Everett		
	B	M	D	B	M	D	B	M	D	B	M	D	B	M	D
College of Education															
Athletic Training	GE														
Curriculum and Instruction		GB						●							
Education [specializations in Cultural Studies and Social Thought in Education; English Language Learners; Mathematics or Science Education]	GE	●	●		●	●	●	●							
Educational Leadership		GB	●			●					●	●			
Educational Psychology		GB	●												
Elementary Education	GE			●			●				●				
Language, Literacy, Technology		GB	●					●							
Social Studies Teaching	GE														
Special Education		●	●			●									
Sport Management	GE	●													
Sport Science	GE	●													
Teaching (Elementary)		●			●			●			●				
Teaching (Secondary)		●			●			●			●				
Elson S. Floyd College of Medicine/College of Nursing															
Nursing (BSN) ¹	●						●			●					
Master of Nursing [specialization in Population Health ¹]					●			●			●				
Doctor of Nursing Practice ¹						●						●			
Speech and Hearing Sciences	●									●	●				
Nutrition and Exercise Physiology	●									●	●	●			
College of Veterinary Medicine															
►Biochemistry [specializations in Biophysics or Molecular Biology]	SC														
Clinical and Translational Services		●	●												
►Combined Anatomic Pathology Residency			●												
►Combined Clinical Microbiology Residency			●												
►Genetic and Cell Biology	SC														
►Immunology and Infectious Diseases		●	●												
Integrative Physiology and Neuroscience		●	●												
►Microbiology [specialization in Medical Technology and Molecular Biology]	SC														
►Molecular Biosciences		●	●												
►Neuroscience [specialization in Computational Neuroscience]	SC	●	●	●		●									
Veterinary Clinical Training Program		●	●												
Edward R. Murrow College of Communication															
Advertising	JC														
Broadcast News	JC														
Broadcast Production	JC														
Communication	JC	●	●												
Communication Technology	JC														
Integrated Strategic Communications	JC				●										
Multimedia Journalism	JC														
Public Relations	JC														
Risk and Crisis Communication	JC														
Science Communication	JC														
Voiland College of Engineering and Architecture															
Architecture (M. Arch)		GB													
Architectural Studies	AR														
►Bioengineering	EN														
►Biological and Agricultural Engineering [specializations in Agriculture Automation Engineering ¹ Bioenergy and Bioproducts Engineering; Food Engineering; or Land Air Water and Environmental Engineering]		●	●					●	●						
►Chemical Engineering	EN	GB	●					●	●						
►Civil Engineering [specializations in Civil/Construction Engineering; Environmental Engineering; Infrastructure Engineering; Structural Engineering; or Water Resource Engineering]	EN	GB	●					●	●						
►Computer Engineering	EN	●													
►Computer Science	CS	GB	●	●	■		●	●	●						
►Construction Engineering	EN														
►Construction Management	EN			●											
►Data Analytics	MA			●										●	

	Pullman			Vancouver			Tri-Cities			Spokane			Everett		
	B	M	D	B	M	D	B	M	D	B	M	D	B	M	D
Voiland College of Engineering and Architecture (cont.)															
▶Electrical Engineering	EN	GB	●	●	■		●	■	●						●
▶Engineering	EN	●		●			●								
▶Engineering Science			●												
▶Environmental Engineering		GB						●							
▶Interior Design	AR	GB													
Landscape Architecture	AR														
▶Materials Science and Engineering	EN	GB	●												
▶Mechanical Engineering	EN	GB	●	●	■		●	■	●						●
Software Engineering	CS														●
Pre-Professional Programs²															
Pre-Dentistry	●			●			●								
Pre-Health	●														
Pre-Law	●			●											
Pre-Medicine	●			●			●								
Pre-Occupational Therapy	●			●											
Pre-Optometry	●			●											
Pre-Pharmacy	●			●			●								
Pre-Physical Therapy	●			●											
Pre-Physician Assistant	●			●											
Pre-Veterinary Medicine	●			●			●								



TRANSFERRING TO WSU

Everyone has a different academic journey. Where you've come from and where you're headed affect how you apply to WSU. If you began your post-secondary education at another accredited school and want to transfer, you'll find WSU is a welcoming place.

- To be admitted as an international transfer student, you need to complete a minimum of 27 semester credits or at least 1 full year of study at an accredited post-secondary school.
- You must have a minimum grade point average of at least 2.50 (on a 4.00 scale) for admission as an international transfer student.

If you have already finished your bachelor's degree and are interested in pursuing a graduate degree, go to your desired graduate program page for program-specific requirements. <https://online.wsu.edu/online-degrees/>

TRANSFER CREDIT FOR A-LEVEL EXAMINATIONS

Students who have completed GCE A-Level examinations may qualify for transfer credit. We do not grant college credit for AS-level exams. To receive transfer credit, applicants must have the awarding body send their official A-level Statement of Results to WSU.

Visit our [Cambridge Credit Chart](https://admission.wsu.edu/apply/ap-ib-and-running-start/cambridge-equivalency-chart/) for more detailed information on which exams qualify for A-level transfer credit. <https://admission.wsu.edu/apply/ap-ib-and-running-start/cambridge-equivalency-chart/>

TRANSFER YOUR CREDITS TO WSU

WSU awards credit for acceptable scores on Advanced Placement (AP), International Baccalaureate (IB), CLEP, and Cambridge A-level exams.

Our [Transfer Credit Equivalency database](https://transfercredit.wsu.edu/) can help you determine which of your classes will transfer to WSU. You can also use it to find out which courses you should be taking to meet your future WSU requirements. <https://transfercredit.wsu.edu/>

WHEN YOU ARRIVE

If you have attended college or university outside the United States, we recommend that you bring course descriptions and syllabi (translated into English) with you. This will help us identify equivalent WSU courses for transfer credit.

If you are transferring from another U.S. college or university to WSU, you should attend Transfer Registration Days. While you can attend any orientation program that is convenient for you, Transfer Registration Days will allow you to register for classes before anyone else.





COMMON QUESTIONS

What is the application deadline?

WSU does not have an application deadline and accepts applications on a rolling basis.

Do I need to submit an SAT or ACT score for admission?

WSU does not require SAT or ACT for admission to the University. We use a holistic approach and require only the equivalent of a U.S. high school education.

What is a measles hold?

WSU requires that all incoming students be immunized against measles prior to class registration. WSU Health and Wellness Services (HWS) oversees the measles hold. To get the measles hold lifted, a student must either provide documentation of immunity or receive a vaccine shot from Health and Wellness Services. Send documentation to:

Health and Wellness Services

Washington State University

PO Box 642302

Pullman, WA 99164-2302

USA

Fax: 1-509-335-6223

Email: hws@wsu.edu (please send in 8.5x11-inch printable format)

Is there a host family program?

There is not an established host family program in the Pullman area. However, the International Center does offer the Friends and Family program, in which students and families spend free time together.

Do I need to arrange housing before I arrive?

You should arrange housing before arriving at WSU. Otherwise, expect to spend US \$80-\$150 per night at local hotels. Students can apply for on-campus housing as soon as they confirm acceptance of their admission offer.

May I open a bank account in Pullman?

Opening a bank account is fairly easy. There are several banks to choose from in Pullman. Banking is one of many topics that will be covered during International Student Orientation. We recommend that you familiarize yourself with the U.S. banking system before you arrive at WSU.

Do I have to pay tuition before I arrive?

No. Tuition and fees are due the first day of class. WSU Student Accounts accepts various methods of payment.

I have been offered admission, but what if I want to wait before starting at WSU?

You can delay entry to WSU for up to 1 semester. To do so, you will need to re-apply for the term you would like to attend. Updated official transcripts and financial documentations may be required. If you have already been issued a WSU I-20 and would like to defer attendance, please contact the Office of International Programs to obtain an updated I-20.

ESTIMATED COST OF ATTENDANCE

Every academic year has two semesters - fall and spring - each about 17 weeks. Students may also take classes during a 12-week summer term for additional cost.

Note: All prices are in U.S. dollars and are subject to change. Go to <https://ip.wsu.edu/future-students/tuition-fees/> for current pricing.

Academic English*

	Academic English	
Program Length	1 Semester	2 Semesters
Tuition and Fees	6,982.08	13,964.16
Housing and Meals	6,057.00	12,114.00
Books and Supplies	692.00	1,384.00
Insurance	912.00	1,824.00
Other**	1,096.00	2,192.00
Living Expenses	8,757.00	17,514.00
Total Expenses	15,739.08	31,478.16



Undergraduate Programs*

	Nonresident Undergraduate Bridge and Direct Entry	
Program Length	1 Semester	2 Semesters
Tuition and Fees	13,556.58	27,113.16
Housing and Meals	6,057.00	12,114.00
Books and Supplies	692.00	1,384.00
Insurance	912.00	1,824.00
Other**	1,096.00	2,192.00
Living Expenses	8,757.00	17,514.00
Total Expenses	22,313.58	44,627.16



Graduate Programs*

	Nonresident Graduate Bridge and Direct Entry	
Program Length	1 Semester	2 Semesters
Tuition and Fees	13,780.58	27,561.16
Housing and Meals	6,057.00	12,114.00
Books and Supplies	692.00	1,384.00
Insurance	912.00	1,824.00
Other**	1,096.00	2,192.00
Living Expenses	8,757.00	17,514.00
Total Expenses	22,537.58	45,075.16



*All costs listed are in U.S. dollars and are estimates that may vary depending on programs and plans selected and personal preference.

**Other costs include personal and miscellaneous expenses (for example, laundry, toiletries, health care, clothing, and entertainment) and will vary depending on personal preference.

SCHOLARSHIPS

International students are automatically considered for scholarships upon admission to WSU. High-achieving international students are guaranteed to receive the International Academic Award.

WSU's Office of International Programs automatically awards these scholarships to qualifying students who are offered admission to a bachelor's degree program.

- Freshman awards - renewable for 3 additional years - are available to students who have less than 1 year of college credit.
- Transfer awards - renewable for 2 additional years - are available to students who have earned at least 1 year (27 semester hours) of transferable college credit.

International Academic Award		
Level 1	\$4,000 per academic year tuition waiver (\$2,000 per semester)	Offered to students with cumulative GPA of 3.60 or higher
Level 2	\$2,000 per academic year tuition waiver (\$1,000 per semester)	Offered to students with cumulative GPA of 3.30 to 3.59

The International Academic Awards are automatically renewable for the lengths indicated above if the renewal criteria for each academic year are met:

- Maintain a minimum 3.2 cumulative GPA by the end of spring semester
- Maintain 12 credits each semester, or complete 24 semester credits by the end of spring semester
- Maintain nonresident degree-seeking student status

ADDITIONAL SCHOLARSHIPS & FUNDING

You may also be eligible for a variety of other awards from the University. To be considered for additional WSU scholarships, apply for admission and scholarships by January 31.

Be sure to check the requirements and deadlines for all scholarships. Some have different deadlines and require supplemental materials.

You are welcome to apply for multiple scholarships.

Learn more about International Merit Awards, Departmental and Program Awards, Emergency Tuition Support Awards and funding sources from some non-University organizations at <https://ip.wsu.edu/future-students/scholarships-funding/>.



Office of International Programs

301 Bryan Hall
Pullman, WA 99164
USA

Undergraduate Admission &
Recruitment
Kruegel Hall
international@wsu.edu | +1 509-335-8117
<https://ip.wsu.edu/future-students/>

Learn more!



APPLY

International Undergraduate

WSU accepts international undergraduate applications at any time of year and operates on a rolling admission basis

- 1 Gather your documents
- 2 Prepare your information
- 3 Complete the application and submit your documents

To apply, visit:
<https://ip.wsu.edu/future-students/applications-forms/>

International Graduate

For graduate admission, apply to the Graduate School

To apply, visit: <https://gradschool.wsu.edu/apply/>

